

Phospho-NUDC (S326) Antibody



PACO02358

Product Information

Size:

50ug

Reactivity:

Human, Mouse, Rat

Source:

Rabbit

Isotype:

IgG

Applications:

ELISA, WB, IHC

Recommended dilutions:

WB:1:500-1:2000, IHC:1:100-1:300

Protein Background:**Gene ID:**

NUDC

Uniprot

Q9Y266

Synonyms:

NUDC; Nuclear migration protein nudC; Nuclear distribution protein C homolog

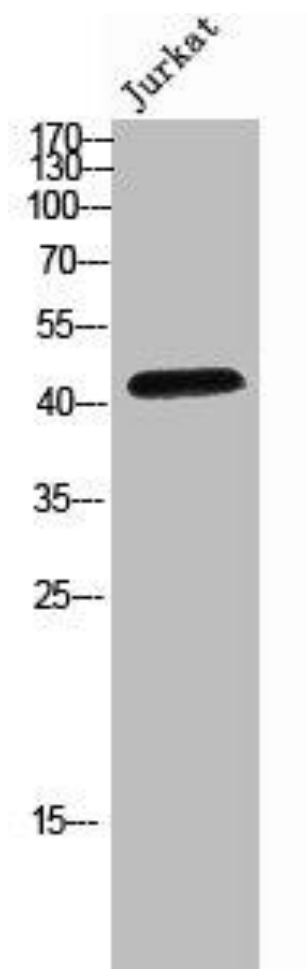
Immunogen:

Synthesized peptide derived from human NUDC around the phosphorylation site of S326.

Storage:

Liquid in PBS containing 50% glycerol, 0.5% BSA and 0.02% sodium azide.

Product Images



Western Blot analysis of JK cells using Phospho-NUDC (S326) Polyclonal Antibody.