

ARPP21 Antibody



PACO02365

Product Information

Size:

50ug

Reactivity:

Human, Mouse

Source:

Rabbit

Isotype:

IgG

Applications:

ELISA, WB, IHC

Recommended dilutions:

WB:1:500-1:2000, IHC:1:100-1:300

Protein Background:

Gene ID:

ARPP21

Uniprot

Q9UBL0

Synonyms:

ARPP21; TARPP; cAMP-regulated phosphoprotein 21; ARPP-21; Thymocyte cAMP-regulated phosphoprotein

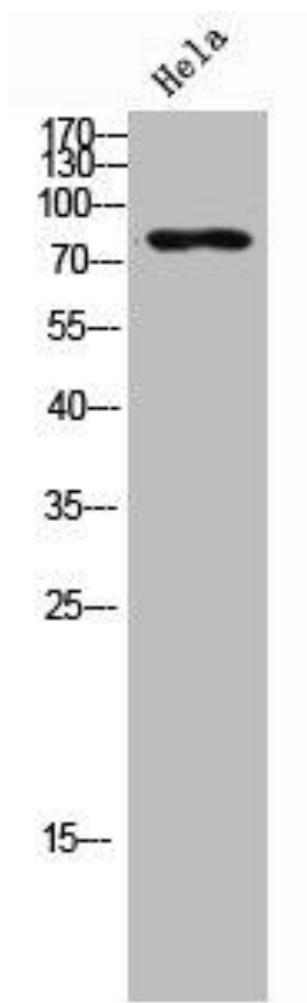
Immunogen:

Synthesized peptide derived from the Internal region of human ARPP-21.

Storage:

Liquid in PBS containing 50% glycerol, 0.5% BSA and 0.02% sodium azide.

Product Images



Western Blot analysis of HeLa cells using ARPP-21 Polyclonal Antibody.