

ZNF460 Antibody



PACO02366

Product Information

Size:

50ug

Reactivity:

Human

Source:

Rabbit

Isotype:

IgG

Applications:

ELISA, WB

Recommended dilutions:

WB:1:500-1:2000

Protein Background:

Gene ID:

ZNF460

Uniprot

Q14592

Synonyms:

ZNF460; ZNF272; Zinc finger protein 460; Zinc finger protein 272; Zinc finger protein HZF8

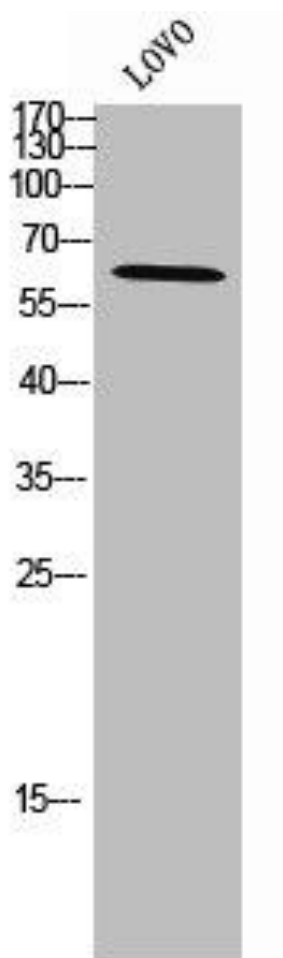
Immunogen:

Synthesized peptide derived from the C-terminal region of human ZNF460.

Storage:

Liquid in PBS containing 50% glycerol, 0.5% BSA and 0.02% sodium azide.

Product Images



Western Blot analysis of LOVO cells using ZNF460 Polyclonal Antibody.