

STARD10 Antibody



PACO02369

Product Information

Size:

50ug

Reactivity:

Human, Mouse, Rat

Source:

Rabbit

Isotype:

IgG

Applications:

ELISA, WB

Recommended dilutions:

WB:1:500-1:2000

Protein Background:**Gene ID:**

STARD10

Uniprot

Q9Y365

Synonyms:

STARD10; SDCCAG28; CGI-52; PCTP-like protein; PCTP-L; Antigen NY-CO-28; START domain-containing protein 10; StARD10; Serologically defined colon cancer antigen 28; StAR-related lipid transfer protein 10

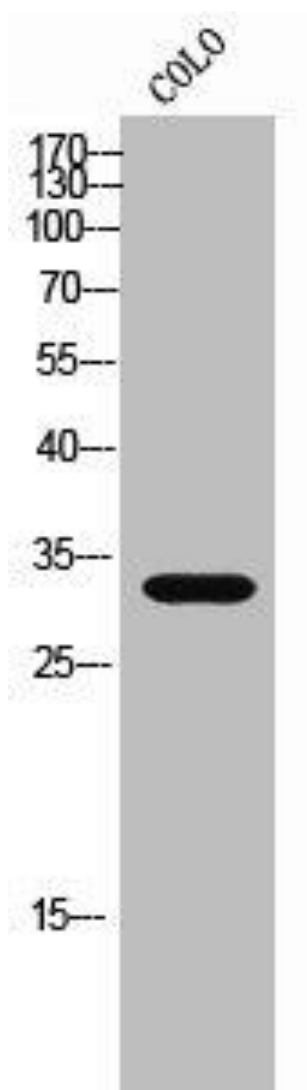
Immunogen:

Synthesized peptide derived from the Internal region of human StARD10.

Storage:

Liquid in PBS containing 50% glycerol, 0.5% BSA and 0.02% sodium azide.

Product Images



Western Blot analysis of CoLo cells using StARD10 Polyclonal Antibody.