

PACO02372

Product Information

Size:

50ug

Reactivity:

Human

Source:

Rabbit

Isotype:

IgG

Applications:

ELISA, WB, IHC

Recommended dilutions:

WB:1:500-1:2000, IHC:1:100-1:300

Protein Background:

Gene ID:

CGB

Uniprot

P01233

Synonyms:

CGB; CGB3; CGB5; CGB7; CGB8; Choriogonadotropin subunit beta; CG-beta; Chorionic gonadotrophin chain beta

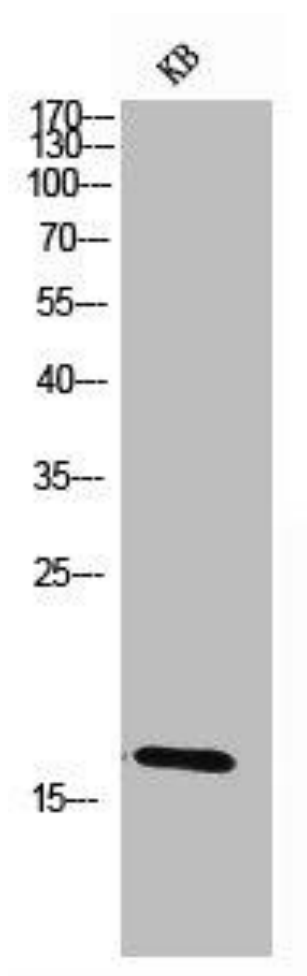
Immunogen:

Synthesized peptide derived from the C-terminal region of human Choriogonadotropin Beta.

Storage:

Liquid in PBS containing 50% glycerol, 0.5% BSA and 0.02% sodium azide.

Product Images



Western Blot analysis of KB cells using Choriogonadotropin Beta Polyclonal Antibody.