

GPR75 Antibody



PACO02381

Product Information

Size:

50ug

Reactivity:

Human, Mouse

Source:

Rabbit

Isotype:

IgG

Applications:

ELISA, WB, IF

Recommended dilutions:

WB:1:500-1:2000, IF:1:200-1:1000

Protein Background:**Gene ID:**

GPR75

Uniprot

O95800

Synonyms:

GPR75; Probable G-protein coupled receptor 75

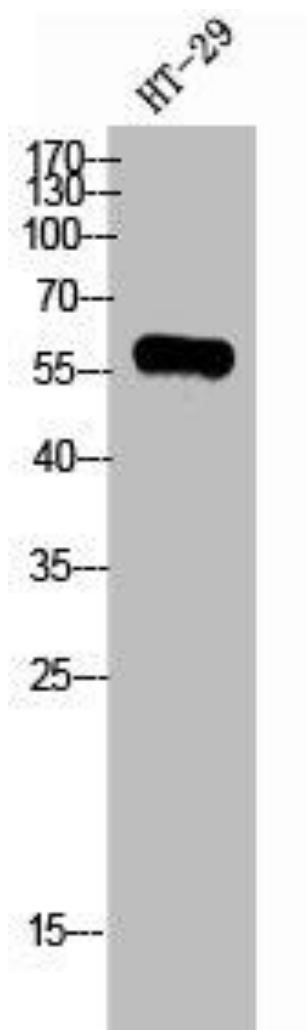
Immunogen:

Synthesized peptide derived from the C-terminal region of human GPR75.

Storage:

Liquid in PBS containing 50% glycerol, 0.5% BSA and 0.02% sodium azide.

Product Images



Western Blot analysis of HT-29 cells using GPR75 Polyclonal Antibody.