

SLC27A5 Antibody



PACO02384

Product Information

Size:

50ug

Reactivity:

Human

Source:

Rabbit

Isotype:

IgG

Applications:

ELISA, WB, IHC, IF

Recommended dilutions:

WB:1:500-1:2000, IHC:1:100-1:300,
IF:1:200-1:1000

Protein Background:**Gene ID:**

SLC27A5

Uniprot

Q9Y2P5

Synonyms:

SLC27A5; ACSB; ACSVL6; FACVL3; FATP5; Bile acyl-CoA synthetase; BACS; Bile acid-CoA ligase; BA-CoA ligase; BAL; Cholate--CoA ligase; Fatty acid transport protein 5; FATP-5; Fatty-acid-coenzyme A ligase; very long-chain 3; Solute carrier fam

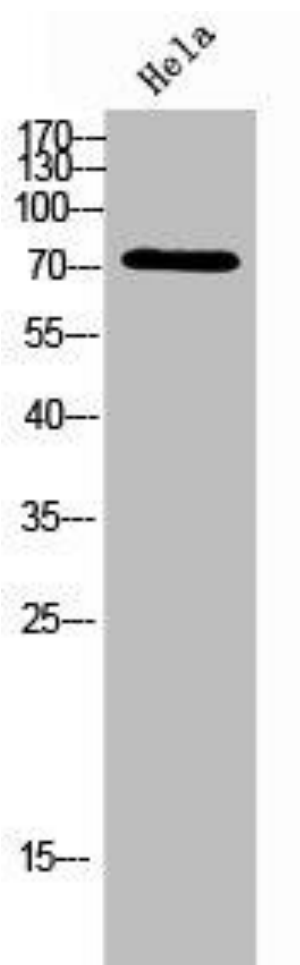
Immunogen:

Synthesized peptide derived from the Internal region of human ACSVL6.

Storage:

Liquid in PBS containing 50% glycerol, 0.5% BSA and 0.02% sodium azide.

Product Images



Western Blot analysis of HeLa cells using ACSVL6 Polyclonal Antibody.