

# KDEL3 Antibody



PACO02386

---

## Product Information

**Size:**

50ug

**Reactivity:**

Human, Mouse

**Source:**

Rabbit

**Isotype:**

IgG

**Applications:**

ELISA, WB, IHC

**Recommended dilutions:**

WB:1:500-1:2000, IHC:1:100-1:300

**Protein Background:****Gene ID:**

KDEL3

**Uniprot**

O43731

**Synonyms:**

KDEL3; ER lumen protein retaining receptor 3; KDEL endoplasmic reticulum protein retention receptor 3; KDEL receptor 3

**Immunogen:**

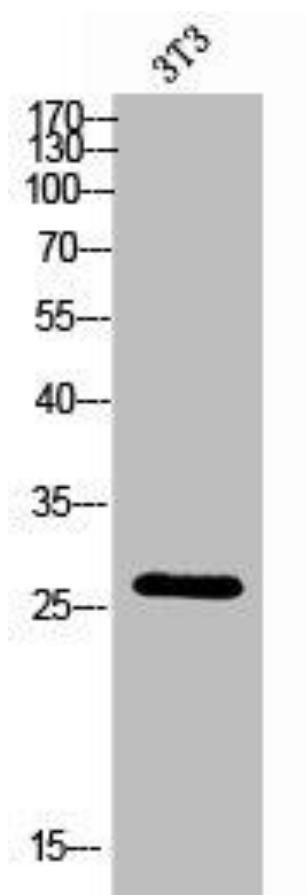
Synthesized peptide derived from the Internal region of human KDEL Receptor 3.

**Storage:**

Liquid in PBS containing 50% glycerol, 0.5% BSA and 0.02% sodium azide.

## Product Images

---



Western Blot analysis of 3T3 cells using KDEL Receptor 3 Polyclonal Antibody.