

STON1 Antibody



PACO02388

Product Information

Size:

50ug

Reactivity:

Human

Source:

Rabbit

Isotype:

IgG

Applications:

ELISA, WB, IHC, IF

Recommended dilutions:

WB:1:500-1:2000, IHC:1:100-1:300,
IF:1:200-1:1000

Protein Background:

Gene ID:

STON1

Uniprot

Q9Y6Q2

Synonyms:

STON1; SALF; SBLF; STN1; Stonin-1; Stoned B-like factor

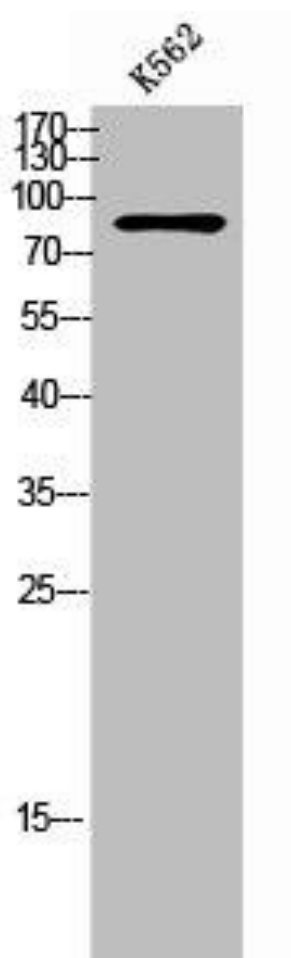
Immunogen:

Synthesized peptide derived from the C-terminal region of human Stonin-1.

Storage:

Liquid in PBS containing 50% glycerol, 0.5% BSA and 0.02% sodium azide.

Product Images



Western Blot analysis of K562 cells using Stonin-1 Polyclonal Antibody.