

Phospho-CHEK1 (S317) Antibody



PACO02392

Product Information

Size:

50ug

Reactivity:

Human, Mouse, Rat

Source:

Rabbit

Isotype:

IgG

Applications:

ELISA, WB, IHC

Recommended dilutions:

WB:1:500-1:2000, IHC:1:100-1:300

Protein Background:**Gene ID:**

CHEK1

Uniprot

O14757

Synonyms:

CHEK1; CHK1; Serine/threonine-protein kinase Chk1; CHK1 checkpoint homolog; Cell cycle checkpoint kinase; Checkpoint kinase-1

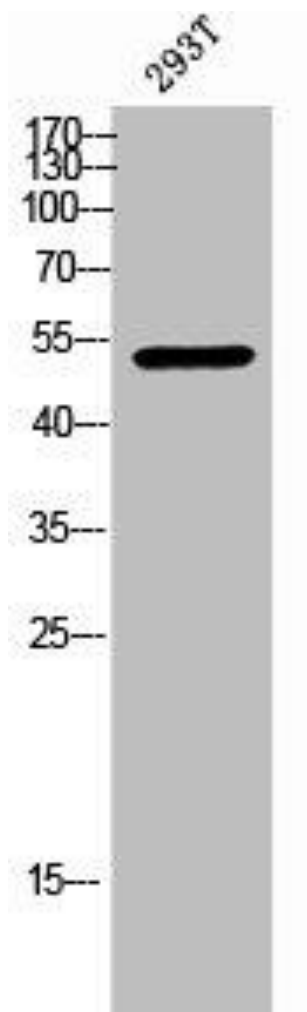
Immunogen:

Synthesized peptide derived from human Chk1 around the phosphorylation site of S317.

Storage:

Liquid in PBS containing 50% glycerol, 0.5% BSA and 0.02% sodium azide.

Product Images



Western Blot analysis of 293T cells using Phospho-Chk1 (S317) Polyclonal Antibody.