

# CAPN10 Antibody



PACO02398

---

## Product Information

**Size:**

50ug

**Reactivity:**

Human

**Source:**

Rabbit

**Isotype:**

IgG

**Applications:**

ELISA, WB

**Recommended dilutions:**

WB:1:500-1:2000

**Protein Background:**

**Gene ID:**

CAPN10

**Uniprot**

Q9HC96

**Synonyms:**

CAPN10; KIAA1845; Calpain-10; Calcium-activated neutral proteinase 10; CANP 10

**Immunogen:**

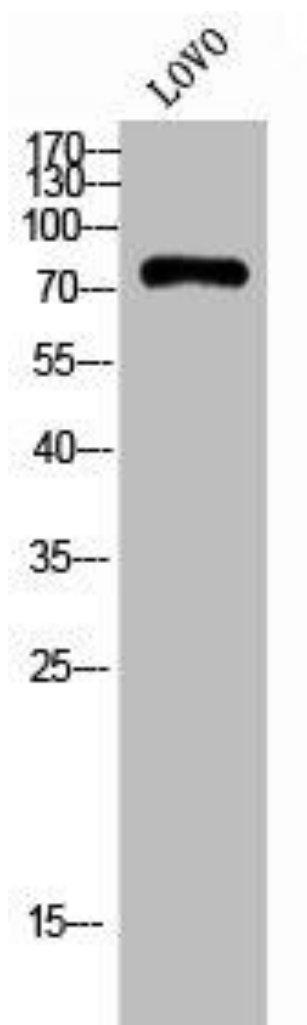
Synthesized peptide derived from the N-terminal region of human Calpain 10.

**Storage:**

Liquid in PBS containing 50% glycerol, 0.5% BSA and 0.02% sodium azide.

## Product Images

---



Western Blot analysis of LOVO cells using Calpain 10 Polyclonal Antibody.