

CORO1A Antibody



PACO02400

Product Information

Size:

50ug

Reactivity:

Human, Mouse, Rat

Source:

Rabbit

Isotype:

IgG

Applications:

ELISA, WB, IHC

Recommended dilutions:

WB:1:500-1:2000, IHC:1:100-1:300

Protein Background:**Gene ID:**

CORO1A

Uniprot

P31146

Synonyms:

CORO1A; CORO1; Coronin-1A; Coronin-like protein A; Clipin-A; Coronin-like protein p57; Tryptophan aspartate-containing coat protein; TACO

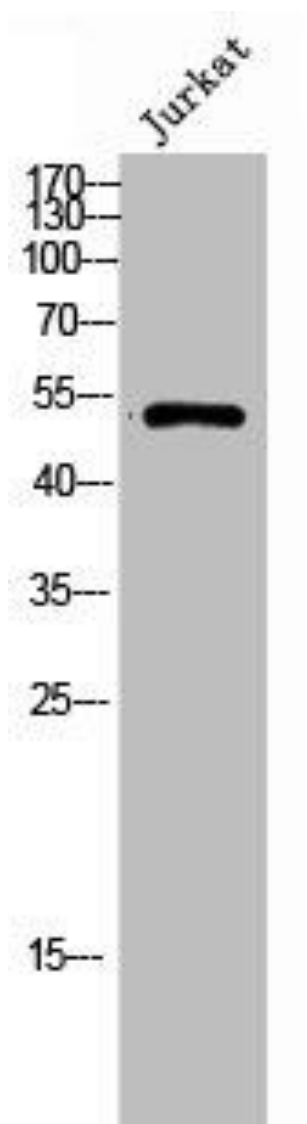
Immunogen:

Synthesized peptide derived from the Internal region of human Coronin 1A.

Storage:

Liquid in PBS containing 50% glycerol, 0.5% BSA and 0.02% sodium azide.

Product Images



Western Blot analysis of JK cells using Coronin 1A Polyclonal Antibody.