

CBX3 Antibody



PACO02423

Product Information

Size:

50ug

Reactivity:

Human, Mouse, Rat

Source:

Rabbit

Isotype:

IgG

Applications:

ELISA, WB, IHC

Recommended dilutions:

WB:1:500-1:2000, IHC:1:100-1:300

Protein Background:

Gene ID:

CBX3

Uniprot

Q13185

Synonyms:

CBX3; Chromobox protein homolog 3; HECH; Heterochromatin protein 1 homolog gamma; HP1 gamma; Modifier 2 protein

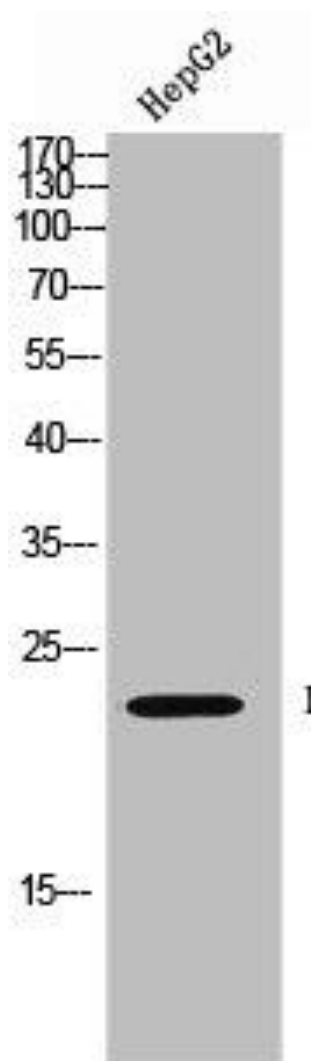
Immunogen:

Synthesized peptide derived from human HP1gamma around the non-phosphorylation site of S93.

Storage:

Liquid in PBS containing 50% glycerol, 0.5% BSA and 0.02% sodium azide.

Product Images



Western Blot analysis of HEPG2 cells using HP1gamma Polyclonal Antibody.