

LMTK3 Antibody



PACO02427

Product Information

Size:

50ug

Reactivity:

Human, Mouse

Source:

Rabbit

Isotype:

IgG

Applications:

ELISA, WB, IHC

Recommended dilutions:

WB:1:500-1:2000, IHC:1:100-1:300

Protein Background:

Gene ID:

LMTK3

Uniprot

Q96Q04

Synonyms:

LMTK3; KIAA1883; TYKLM3; Serine/threonine-protein kinase LMTK3; Lemur tyrosine kinase 3

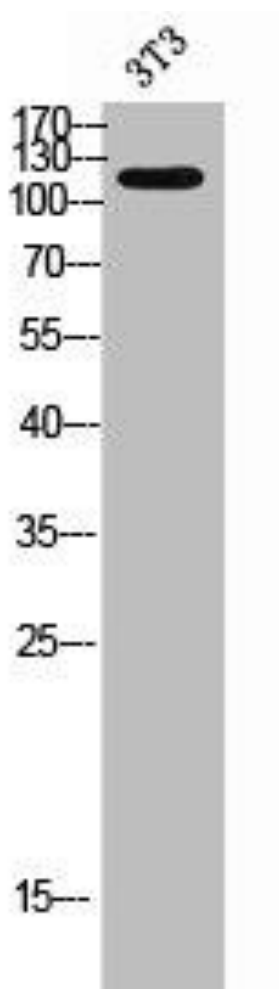
Immunogen:

Synthesized peptide derived from the C-terminal region of human LMTK3.

Storage:

Liquid in PBS containing 50% glycerol, 0.5% BSA and 0.02% sodium azide.

Product Images



Western Blot analysis of 3T3 cells using LMTK3 Polyclonal Antibody.