

GPR146 Antibody



PACO02431

Product Information

Size:

50ug

Reactivity:

Human

Source:

Rabbit

Isotype:

IgG

Applications:

ELISA, WB, IF

Recommended dilutions:

WB:1:500-1:2000, IF:1:200-1:1000

Protein Background:

Gene ID:

GPR146

Uniprot

Q96CH1

Synonyms:

GPR146; PGR8; Probable G-protein coupled receptor 146; G-protein coupled receptor PGR8

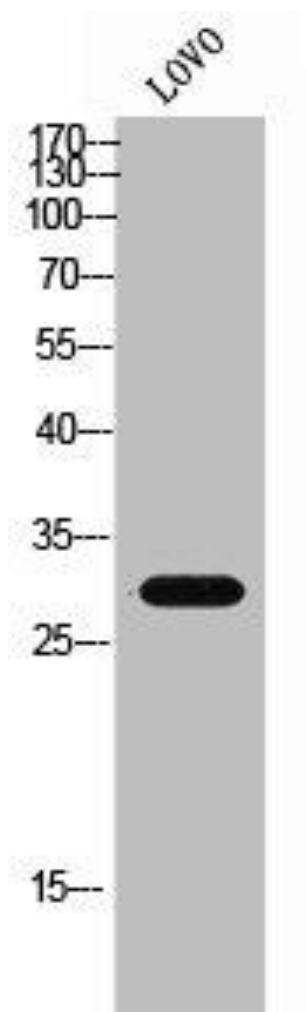
Immunogen:

Synthesized peptide derived from the Internal region of human GPR146.

Storage:

Liquid in PBS containing 50% glycerol, 0.5% BSA and 0.02% sodium azide.

Product Images



Western Blot analysis of LOVO cells using GPR146 Polyclonal Antibody.