

MIA2 Antibody



PACO02434

Product Information

Size:

50ug

Reactivity:

Human

Source:

Rabbit

Isotype:

IgG

Applications:

ELISA, WB

Recommended dilutions:

WB:1:500-1:2000

Protein Background:

Gene ID:

MIA2

Uniprot

Q96PC5

Synonyms:

MIA2; Melanoma inhibitory activity protein 2

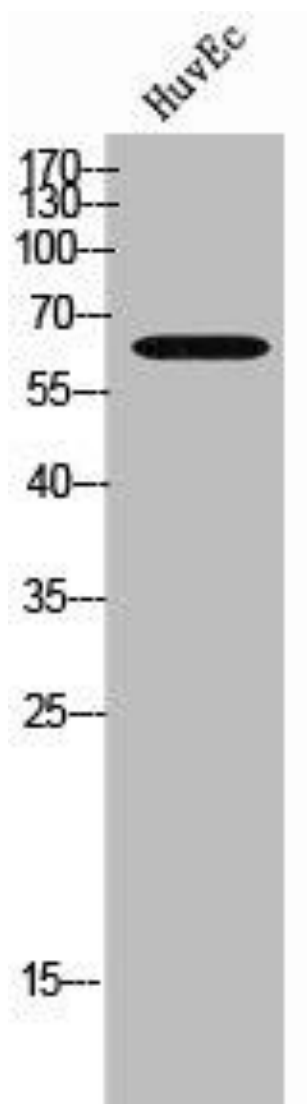
Immunogen:

Synthesized peptide derived from the Internal region of human MIA2.

Storage:

Liquid in PBS containing 50% glycerol, 0.5% BSA and 0.02% sodium azide.

Product Images



Western Blot analysis of HuvEc cells using MIA2 Polyclonal Antibody.