

# CIB3 Antibody



PACO02438

---

## Product Information

**Size:**

50ug

**Reactivity:**

Human, Mouse

**Source:**

Rabbit

**Isotype:**

IgG

**Applications:**

ELISA, WB

**Recommended dilutions:**

WB:1:500-1:2000

**Protein Background:**

**Gene ID:**

CIB3

**Uniprot**

Q96Q77

**Synonyms:**

CIB3; KIP3; Calcium and integrin-binding family member 3; Kinase-interacting protein 3; KIP 3

**Immunogen:**

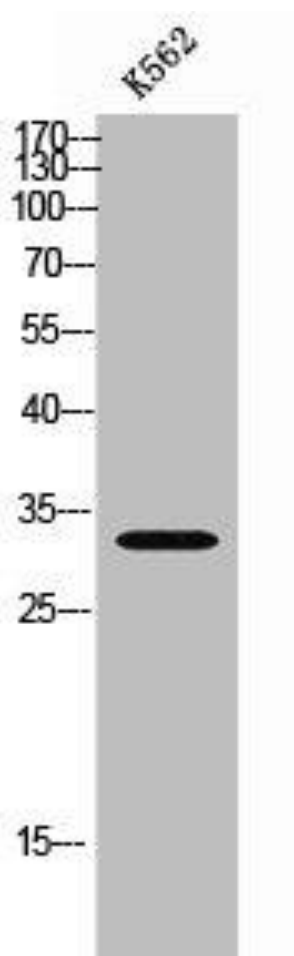
Synthesized peptide derived from the C-terminal region of human CIB3.

**Storage:**

Liquid in PBS containing 50% glycerol, 0.5% BSA and 0.02% sodium azide.

## Product Images

---



Western Blot analysis of K562 cells using CIB3 Polyclonal Antibody.