

# SLC24A4 Antibody



PACO02458

---

## Product Information

**Size:**

50ug

**Reactivity:**

Human, Mouse, Rat

**Source:**

Rabbit

**Isotype:**

IgG

**Applications:**

ELISA, WB

**Recommended dilutions:**

WB:1:500-1:2000

**Protein Background:****Gene ID:**

SLC24A4

**Uniprot**

Q8NFF2

**Synonyms:**

SLC24A4; NCKX4; Sodium/potassium/calcium exchanger 4; Na(+)/K(+)/Ca(2+)-exchange protein 4; Solute carrier family 24 member 4

**Immunogen:**

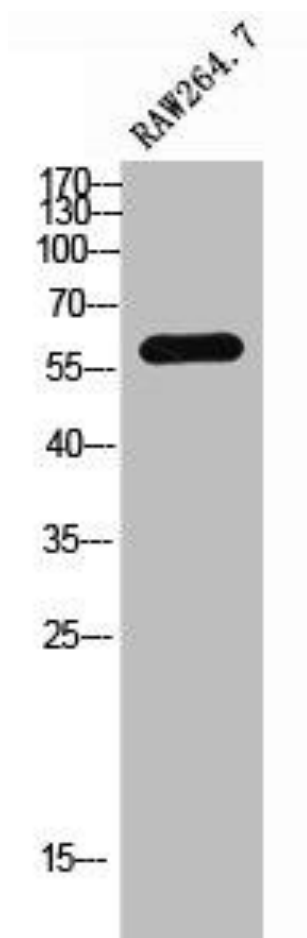
Synthesized peptide derived from the Internal region of human NCKX4.

**Storage:**

Liquid in PBS containing 50% glycerol, 0.5% BSA and 0.02% sodium azide.

## Product Images

---



Western Blot analysis of RAW264.7 cells using NCKX4 Polyclonal Antibody.