

# Phospho-CSNK1A1/CSNK1A1L (Y294) Antibody



PACO02492

---

## Product Information

**Size:**

50ug

**Reactivity:**

Human, Mouse, Rat

**Source:**

Rabbit

**Isotype:**

IgG

**Applications:**

ELISA, WB, IHC

**Recommended dilutions:**

WB:1:500-1:2000, IHC:1:100-1:300

**Protein Background:****Gene ID:**

CSNK1A1/CSNK1A1L

**Uniprot**

P48729/Q8N752

**Synonyms:**

CSNK1A1; Casein kinase I isoform alpha; CKI-alpha; CK1; CSNK1A1L; Casein kinase I isoform alpha-like; CKI-alpha-like; CK1

**Immunogen:**

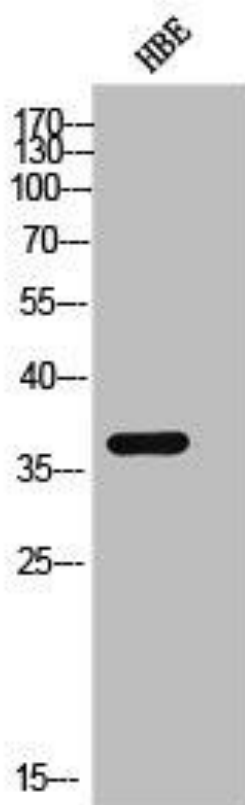
Synthesized peptide derived from human Casein Kinase I alpha around the phosphorylation site of Y294.

**Storage:**

Liquid in PBS containing 50% glycerol, 0.5% BSA and 0.02% sodium azide.

## Product Images

---



Western Blot analysis of HBE cells using Phospho-Casein Kinase Ialpha (Y294) Polyclonal Antibody.