

CYP11A1 Antibody



PACO02548

Product Information

Size:

50ug

Reactivity:

Human

Source:

Rabbit

Isotype:

IgG

Applications:

ELISA, WB

Recommended dilutions:

WB:1:500-1:2000

Protein Background:

Gene ID:

CYP11A1

Uniprot

P05108

Synonyms:

CYP11A1; CYP11A; Cholesterol side-chain cleavage enzyme; mitochondrial; CYPXIA1; Cholesterol desmolase; Cytochrome P450 11A1; Cytochrome P450(scc)

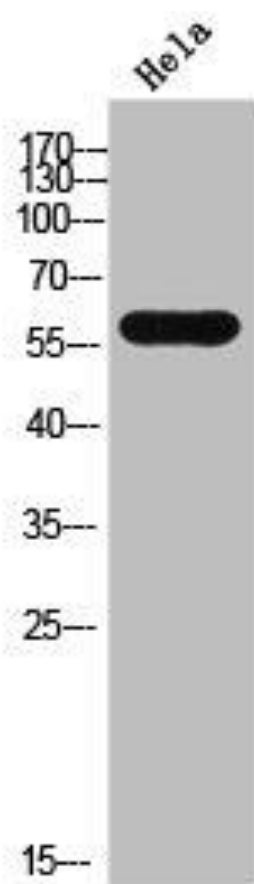
Immunogen:

Synthesized peptide derived from the C-terminal region of human CYP11A1.

Storage:

Liquid in PBS containing 50% glycerol, 0.5% BSA and 0.02% sodium azide.

Product Images



Western Blot analysis of HeLa cells using CYP11A1 Polyclonal Antibody.