

# PAQR7 Antibody



PACO02568

---

## Product Information

**Size:**

50ug

**Reactivity:**

Human

**Source:**

Rabbit

**Isotype:**

IgG

**Applications:**

ELISA, WB, IF

**Recommended dilutions:**

WB:1:500-1:2000, IF:1:200-1:1000

**Protein Background:**

**Gene ID:**

PAQR7

**Uniprot**

Q86WK9

**Synonyms:**

PAQR7; MRPA; Membrane progesterin receptor alpha; mPR alpha; Progesterin and adiponectin receptor family member 7; Progesterin and adiponectin receptor family member VII

**Immunogen:**

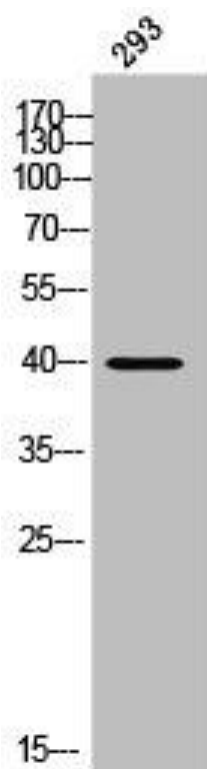
Synthesized peptide derived from the C-terminal region of human mPRalpha.

**Storage:**

Liquid in PBS containing 50% glycerol, 0.5% BSA and 0.02% sodium azide.

## Product Images

---



Western Blot analysis of 293 cells using mPRalpha Polyclonal Antibody.