

OLFML2A Antibody



PACO02579

Product Information

Size:

50ug

Reactivity:

Human

Source:

Rabbit

Isotype:

IgG

Applications:

ELISA, WB, IF

Recommended dilutions:

WB:1:500-1:2000, IF:1:200-1:1000

Protein Background:

Gene ID:

OLFML2A

Uniprot

Q68BL7

Synonyms:

OLFML2A; Olfactomedin-like protein 2A; Photomedin-1

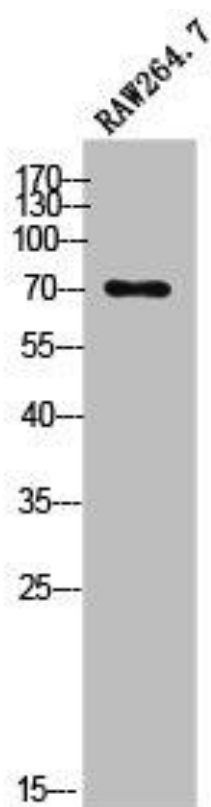
Immunogen:

Synthesized peptide derived from the Internal region of human Photomedin-1.

Storage:

Liquid in PBS containing 50% glycerol, 0.5% BSA and 0.02% sodium azide.

Product Images



Western Blot analysis of RAW264.7 cells using Photomedin-1 Polyclonal Antibody.