

# Phospho-EGFR (Y869) Antibody



PACO02620

---

## Product Information

**Size:**

50ug

**Reactivity:**

Human, Mouse, Rat

**Source:**

Rabbit

**Isotype:**

IgG

**Applications:**

ELISA, WB, IF

**Recommended dilutions:**

WB:1:500-1:2000, IF:1:200-1:1000

**Protein Background:****Gene ID:**

EGFR

**Uniprot**

P00533

**Synonyms:**

EGFR; ERBB; ERBB1; HER1; Epidermal growth factor receptor; Proto-oncogene c-ErbB-1; Receptor tyrosine-protein kinase erbB-1

**Immunogen:**

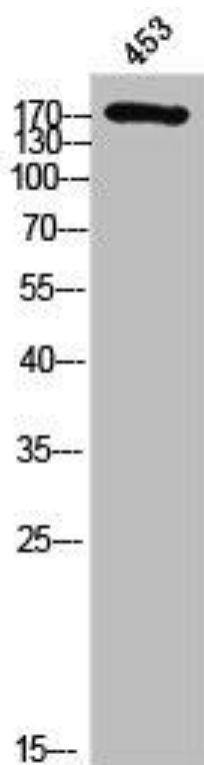
Synthesized peptide derived from human EGFR around the phosphorylation site of Y869.

**Storage:**

Liquid in PBS containing 50% glycerol, 0.5% BSA and 0.02% sodium azide.

## Product Images

---



Western Blot analysis of 453 cells using Phospho-EGFR (Y869) Polyclonal Antibody.