

EMX1 Antibody



PACO02646

Product Information

Size:

50ug

Reactivity:

Human, Mouse, Rat

Source:

Rabbit

Isotype:

IgG

Applications:

ELISA, WB

Recommended dilutions:

WB:1:500-1:2000

Protein Background:

Gene ID:

EMX1

Uniprot

Q04741

Synonyms:

EMX1; Homeobox protein EMX1; Empty spiracles homolog 1; Empty spiracles-like protein 1

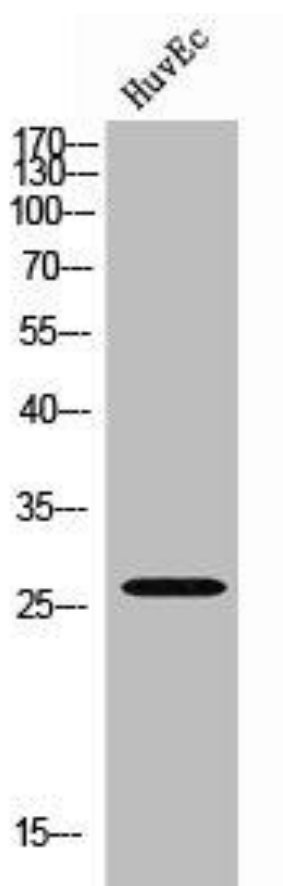
Immunogen:

Synthesized peptide derived from the C-terminal region of human Emx1.

Storage:

Liquid in PBS containing 50% glycerol, 0.5% BSA and 0.02% sodium azide.

Product Images



Western Blot analysis of HuvEC cells using Emx1 Polyclonal Antibody.