

Phospho-EPHA4 (Y596) Antibody



PACO02651

Product Information

Size:

50ug

Reactivity:

Human, Mouse

Source:

Rabbit

Isotype:

IgG

Applications:

ELISA, WB

Recommended dilutions:

WB:1:500-1:2000

Protein Background:**Gene ID:**

EPHA4

Uniprot

P54764

Synonyms:

EPHA4; HEK8; SEK; TYRO1; Ephrin type-A receptor 4; EPH-like kinase 8; EK8; hEK8; Tyrosine-protein kinase TYRO1; Tyrosine-protein kinase receptor SEK

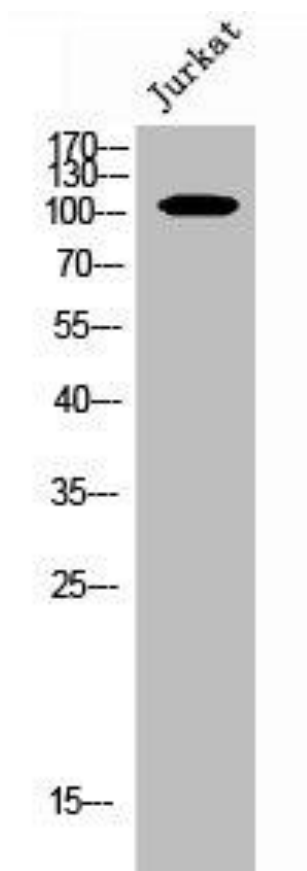
Immunogen:

Synthesized peptide derived from human EphA4 around the phosphorylation site of Y596.

Storage:

Liquid in PBS containing 50% glycerol, 0.5% BSA and 0.02% sodium azide.

Product Images



Western Blot analysis of JK cells using Phospho-EphA4 (Y596) Polyclonal Antibody.