

Phospho-EPHA7 (Y791) Antibody



PACO02652

Product Information

Size:

50ug

Reactivity:

Human, Mouse, Rat

Source:

Rabbit

Isotype:

IgG

Applications:

ELISA, WB

Recommended dilutions:

WB:1:500-1:2000

Protein Background:

Gene ID:

EPHA7

Uniprot

Q15375

Synonyms:

EPHA7; EHK3; HEK11; Ephrin type-A receptor 7; EPH homology kinase 3; EHK-3; EPH-like kinase 11; EK11; hEK11

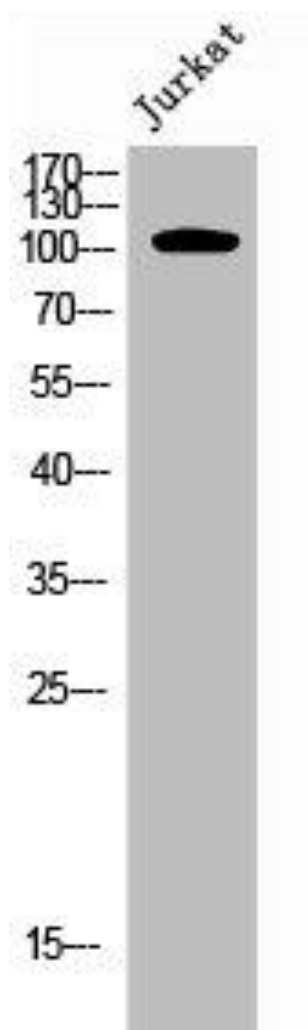
Immunogen:

Synthesized peptide derived from human EphA7 around the phosphorylation site of Y791.

Storage:

Liquid in PBS containing 50% glycerol, 0.5% BSA and 0.02% sodium azide.

Product Images



Western Blot analysis of JK cells using Phospho-EphA7 (Y791) Polyclonal Antibody.