

EPHB1/EPHB2/EPHB3/EPHB4 Antibody



PACO02656

Product Information

Size:

50ug

Reactivity:

Human, Mouse

Source:

Rabbit

Isotype:

IgG

Applications:

ELISA, WB, IHC

Recommended dilutions:

WB:1:500-1:2000, IHC:1:100-1:300

Protein Background:**Gene ID:**

EPHB1/EPHB2/EPHB3/EPHB4

Uniprot

P54762/P29323/P54753/P54760

Synonyms:

EPHB1; ELK; EPHT2; HEK6; NET; Ephrin type-B receptor 1; ELK; EPH tyrosine kinase 2; EPH-like kinase 6; EK6; hEK6; Neuronally-expressed EPH-related tyrosine kinase; NET; Tyrosine-protein kinase receptor EPH-2; EPHB2; DRT; EPHT3; EPTH3; ERK;

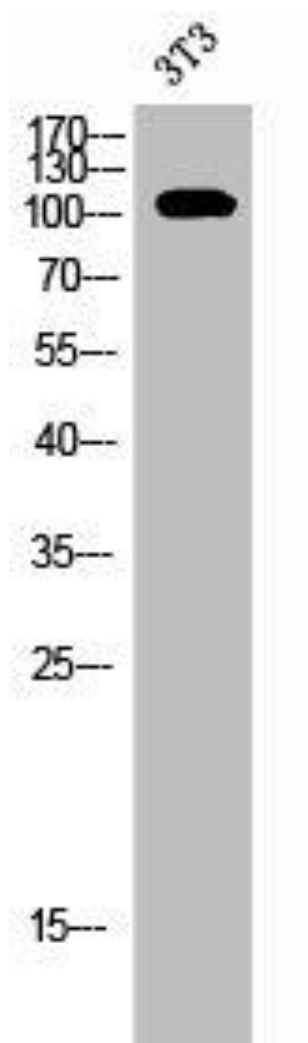
Immunogen:

Synthesized peptide derived from human EphB1/2/3/4 around the non-phosphorylation site of Y600/602/614/596.

Storage:

Liquid in PBS containing 50% glycerol, 0.5% BSA and 0.02% sodium azide.

Product Images



Western Blot analysis of 3T3 cells using EphB1/2/3/4 Polyclonal Antibody.