

# Phospho-EPOR (Y368) Antibody



PACO02659

---

## Product Information

**Size:**

50ug

**Reactivity:**

Human, Mouse, Rat

**Source:**

Rabbit

**Isotype:**

IgG

**Applications:**

ELISA, WB, IF

**Recommended dilutions:**

WB:1:500-1:2000, IF:1:200-1:1000

**Protein Background:**

**Gene ID:**

EPOR

**Uniprot**

P19235

**Synonyms:**

EPOR; Erythropoietin receptor; EPO-R

**Immunogen:**

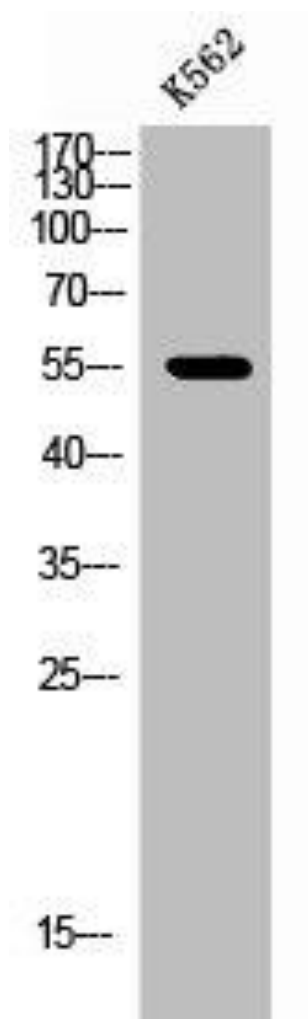
Synthesized peptide derived from human EpoR around the phosphorylation site of Y368.

**Storage:**

Liquid in PBS containing 50% glycerol, 0.5% BSA and 0.02% sodium azide.

## Product Images

---



Western Blot analysis of K562 cells using Phospho-EpoR (Y368) Polyclonal Antibody.