

# Phospho-EPS15 (Y849) Antibody



PACO02662

---

## Product Information

**Size:**

50ug

**Reactivity:**

Human, Mouse, Rat

**Source:**

Rabbit

**Isotype:**

IgG

**Applications:**

ELISA, WB

**Recommended dilutions:**

WB:1:500-1:2000

**Protein Background:****Gene ID:**

EPS15

**Uniprot**

P42566

**Synonyms:**

EPS15; AF1P; Epidermal growth factor receptor substrate 15; Protein Eps15; Protein AF-1p

**Immunogen:**

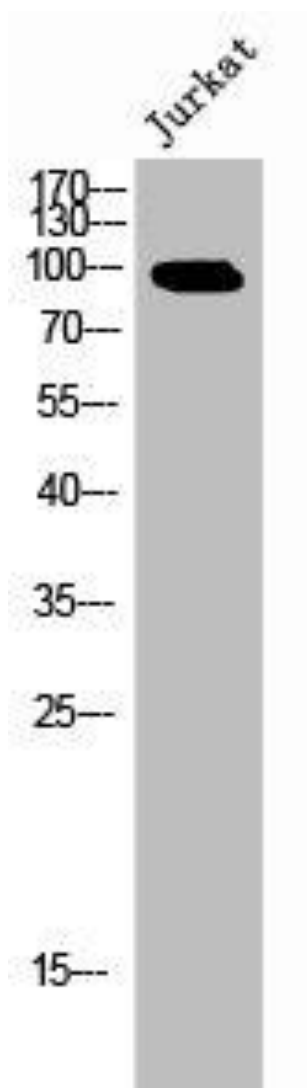
Synthesized peptide derived from human Eps15 around the phosphorylation site of Y849.

**Storage:**

Liquid in PBS containing 50% glycerol, 0.5% BSA and 0.02% sodium azide.

## Product Images

---



Western Blot analysis of JK cells using Phospho-Eps15 (Y849) Polyclonal Antibody.