

Phospho-ERBB3 (Y1197) Antibody



PACO02665

Product Information

Size:

50ug

Reactivity:

Human, Mouse, Rat

Source:

Rabbit

Isotype:

IgG

Applications:

ELISA, WB

Recommended dilutions:

WB:1:500-1:2000

Protein Background:**Gene ID:**

ERBB3

Uniprot

P21860

Synonyms:

ERBB3; HER3; Receptor tyrosine-protein kinase erbB-3; Proto-oncogene-like protein c-ErbB-3; Tyrosine kinase-type cell surface receptor HER3

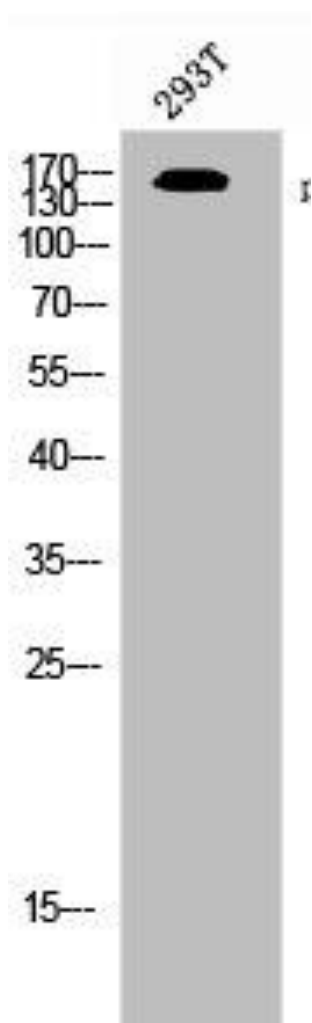
Immunogen:

Synthesized peptide derived from human ErbB-3 around the phosphorylation site of Y1197.

Storage:

Liquid in PBS containing 50% glycerol, 0.5% BSA and 0.02% sodium azide.

Product Images



Western Blot analysis of 293T cells using Phospho-ErbB-3 (Y1197) Polyclonal Antibody.