

# Phospho-ERBB3 (Y1289) Antibody



PACO02666

---

## Product Information

**Size:**

50ug

**Reactivity:**

Human, Mouse, Rat

**Source:**

Rabbit

**Isotype:**

IgG

**Applications:**

ELISA, WB, IHC, IF

**Recommended dilutions:**

WB:1:500-1:2000, IHC:1:100-1:300,  
IF:1:200-1:1000

**Protein Background:****Gene ID:**

ERBB3

**Uniprot**

P21860

**Synonyms:**

ERBB3; HER3; Receptor tyrosine-protein kinase erbB-3; Proto-oncogene-like protein c-ErbB-3; Tyrosine kinase-type cell surface receptor HER3

**Immunogen:**

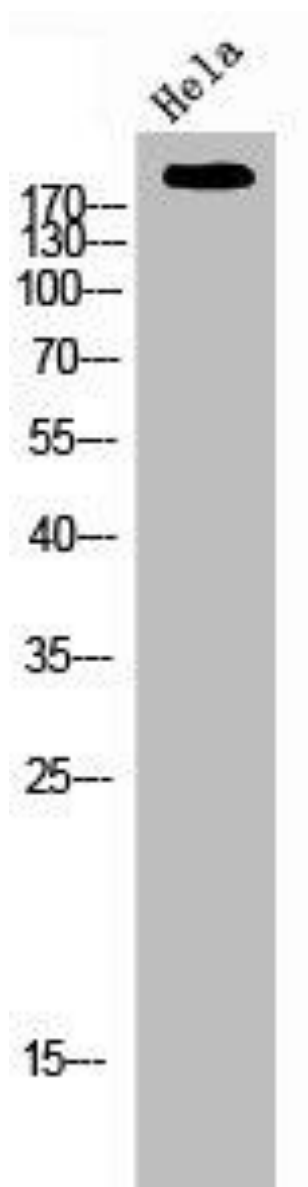
Synthesized peptide derived from human ErbB-3 around the phosphorylation site of Y1289.

**Storage:**

Liquid in PBS containing 50% glycerol, 0.5% BSA and 0.02% sodium azide.

## Product Images

---



Western Blot analysis of HeLa cells using Phospho-ErbB-3 (Y1289) Polyclonal Antibody.