

# Phospho-ESR1 (S106) Antibody



PACO02672

---

## Product Information

**Size:**

50ug

**Reactivity:**

Human, Mouse, Rat

**Source:**

Rabbit

**Isotype:**

IgG

**Applications:**

ELISA, WB, IHC, IF

**Recommended dilutions:**

WB:1:500-1:2000, IHC:1:100-1:300,  
IF:1:200-1:1000

**Protein Background:****Gene ID:**

ESR1

**Uniprot**

P03372

**Synonyms:**

ESR1; ESR; NR3A1; Estrogen receptor; ER; ER-alpha; Estradiol receptor; Nuclear receptor subfamily 3 group A member 1

**Immunogen:**

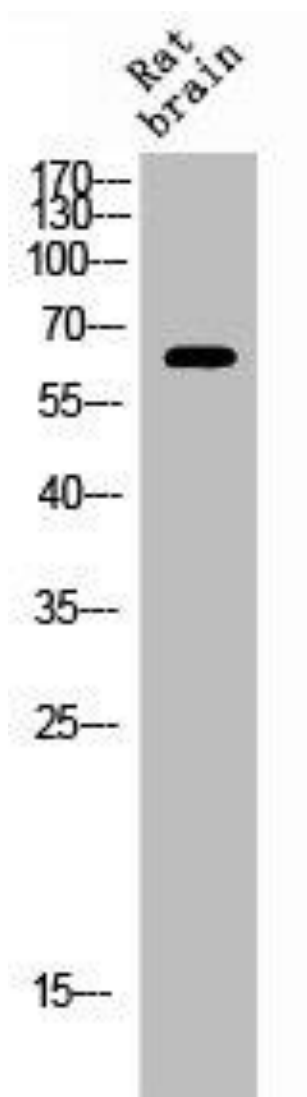
Synthesized peptide derived from human ERalpha around the phosphorylation site of S106.

**Storage:**

Liquid in PBS containing 50% glycerol, 0.5% BSA and 0.02% sodium azide.

## Product Images

---



Western Blot analysis of RAT-BRAIN cells using Phospho-ERalpha (S106) Polyclonal Antibody.