

Phospho-ESR2 (S105) Antibody



PACO02676

Product Information

Size:

50ug

Reactivity:

Human, Mouse, Rat

Source:

Rabbit

Isotype:

IgG

Applications:

ELISA, WB, IF

Recommended dilutions:

WB:1:500-1:2000, IF:1:200-1:1000

Protein Background:**Gene ID:**

ESR2

Uniprot

Q92731

Synonyms:

ESR2; ESTRB; NR3A2; Estrogen receptor beta; ER-beta; Nuclear receptor subfamily 3 group A member 2

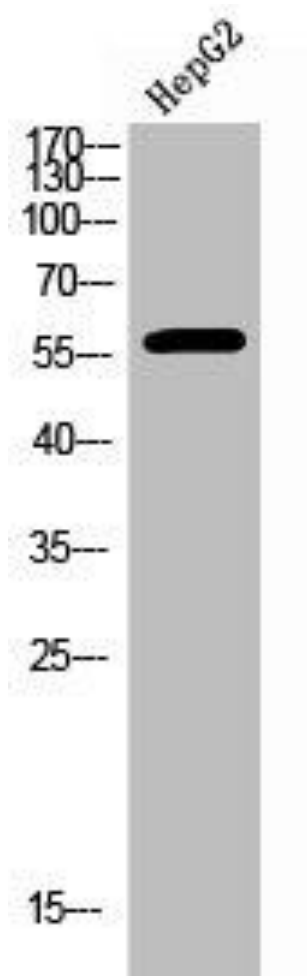
Immunogen:

Synthesized peptide derived from human ERBeta around the phosphorylation site of S105.

Storage:

Liquid in PBS containing 50% glycerol, 0.5% BSA and 0.02% sodium azide.

Product Images



Western Blot analysis of HepG2 cells using Phospho-ERBeta (S105) Polyclonal Antibody.