

# Phospho-FANCG (S383) Antibody



PACO02688

---

## Product Information

**Size:**

50ug

**Reactivity:**

Human

**Source:**

Rabbit

**Isotype:**

IgG

**Applications:**

ELISA, WB

**Recommended dilutions:**

WB:1:500-1:2000

**Protein Background:**

**Gene ID:**

FANCG

**Uniprot**

O15287

**Synonyms:**

FANCG; XRCC9; Fanconi anemia group G protein; Protein FACG; DNA repair protein XRCC9

**Immunogen:**

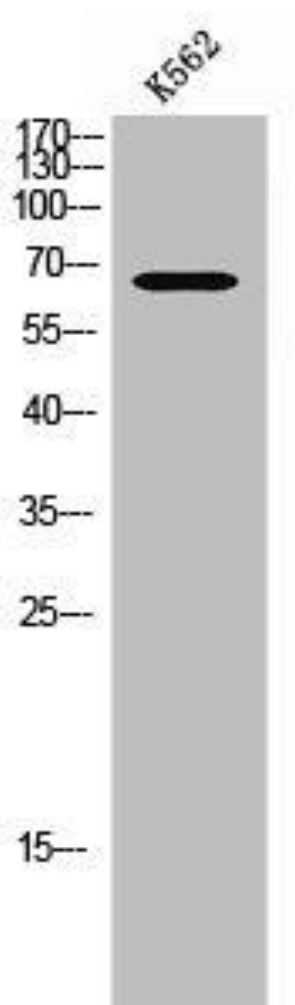
Synthesized peptide derived from human FANCG around the phosphorylation site of S383.

**Storage:**

Liquid in PBS containing 50% glycerol, 0.5% BSA and 0.02% sodium azide.

## Product Images

---



Western Blot analysis of K562 cells using Phospho-FANCG (S383) Polyclonal Antibody.