

ZSCAN25 Antibody



PACO02709

Product Information

Size:

50ug

Reactivity:

Human

Source:

Rabbit

Isotype:

IgG

Applications:

ELISA, WB

Recommended dilutions:

WB:1:500-1:2000

Protein Background:

Gene ID:

ZSCAN25

Uniprot

Q6NSZ9

Synonyms:

ZNF498; ZSCAN25; Zinc finger protein 498; Zinc finger and SCAN domain-containing protein 25

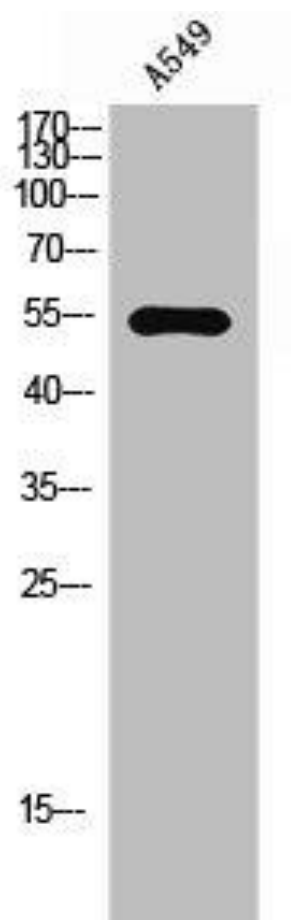
Immunogen:

Synthesized peptide derived from the Internal region of human ZNF498.

Storage:

Liquid in PBS containing 50% glycerol, 0.5% BSA and 0.02% sodium azide.

Product Images



Western Blot analysis of A549 cells using ZNF498 Polyclonal Antibody.