

# ZP1 Antibody



PACO02734

---

## Product Information

**Size:**

50ug

**Reactivity:**

Human

**Source:**

Rabbit

**Isotype:**

IgG

**Applications:**

ELISA, WB, IHC

**Recommended dilutions:**

WB:1:500-1:2000, IHC:1:100-1:300

**Protein Background:****Gene ID:**

ZP1

**Uniprot**

P60852

**Synonyms:**

ZP1; Zona pellucida sperm-binding protein 1; Zona pellucida glycoprotein 1; Zp-1

**Immunogen:**

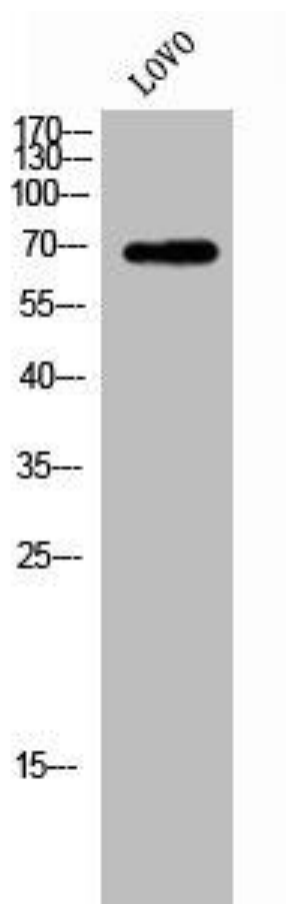
Synthesized peptide derived from the Internal region of human ZP1.

**Storage:**

Liquid in PBS containing 50% glycerol, 0.5% BSA and 0.02% sodium azide.

## Product Images

---



Western Blot analysis of LOVO cells using ZP1 Polyclonal Antibody.