

# FOXE3 Antibody



PACO02744

---

## Product Information

**Size:**

50ug

**Reactivity:**

Human, Mouse, Rat

**Source:**

Rabbit

**Isotype:**

IgG

**Applications:**

ELISA, WB, IHC

**Recommended dilutions:**

WB:1:500-1:2000, IHC:1:100-1:300

**Protein Background:****Gene ID:**

FOXE3

**Uniprot**

Q13461

**Synonyms:**

FOXE3; FKHL12; FREAC8; Forkhead box protein E3; Forkhead-related protein FKHL12; Forkhead-related transcription factor 8; FREAC-8

**Immunogen:**

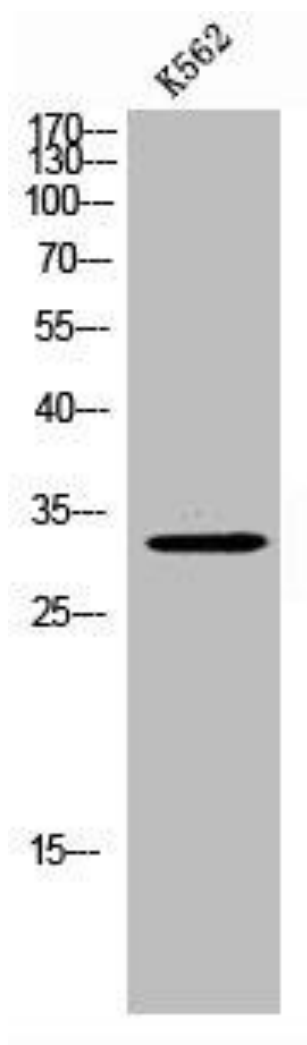
Synthesized peptide derived from the Internal region of human FoxE3.

**Storage:**

Liquid in PBS containing 50% glycerol, 0.5% BSA and 0.02% sodium azide.

## Product Images

---



Western Blot analysis of K562 cells using FoxE3 Polyclonal Antibody.