

MAST3 Antibody



PACO02748

Product Information

Size:

50ug

Reactivity:

Human, Mouse

Source:

Rabbit

Isotype:

IgG

Applications:

ELISA, WB

Recommended dilutions:

WB:1:500-1:2000

Protein Background:

Gene ID:

MAST3

Uniprot

O60307

Synonyms:

MAST3; KIAA0561; Microtubule-associated serine/threonine-protein kinase 3

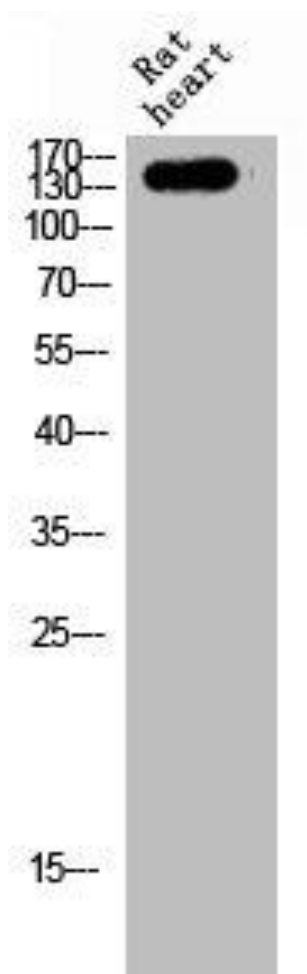
Immunogen:

Synthesized peptide derived from the C-terminal region of human MAST3.

Storage:

Liquid in PBS containing 50% glycerol, 0.5% BSA and 0.02% sodium azide.

Product Images



Western Blot analysis of RAT-HEART cells using MAST3 Polyclonal Antibody.