

Phospho-FOXO1 (S329) Antibody



PACO02752

Product Information

Size:

50ug

Reactivity:

Human, Mouse, Rat

Source:

Rabbit

Isotype:

IgG

Applications:

ELISA, WB, IHC

Recommended dilutions:

WB:1:500-1:2000, IHC:1:100-1:300

Protein Background:

Gene ID:

FOXO1

Uniprot

Q12778

Synonyms:

FOXO1; FKHR; FOXO1A; Forkhead box protein O1; Forkhead box protein O1A; Forkhead in rhabdomyosarcoma

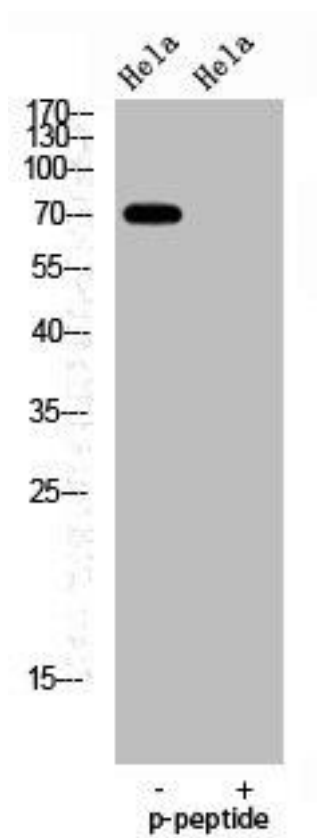
Immunogen:

Synthesized peptide derived from human FoxO1A around the phosphorylation site of S329.

Storage:

Liquid in PBS containing 50% glycerol, 0.5% BSA and 0.02% sodium azide.

Product Images



Western Blot analysis of HELA cells using Phospho-FoxO1A (S329) Polyclonal Antibody.