

Phospho-FOXO3 (S253) Antibody



PACO02753

Product Information

Size:

50ug

Reactivity:

Human, Mouse, Rat

Source:

Rabbit

Isotype:

IgG

Applications:

ELISA, WB, IHC, IF

Recommended dilutions:

WB:1:500-1:2000, IHC:1:100-1:300,
IF:1:200-1:1000

Protein Background:

Gene ID:

FOXO3

Uniprot

O43524

Synonyms:

FOXO3; FKHL1; FOXO3A; Forkhead box protein O3; AF6q21 protein; Forkhead in rhabdomyosarcoma-like 1

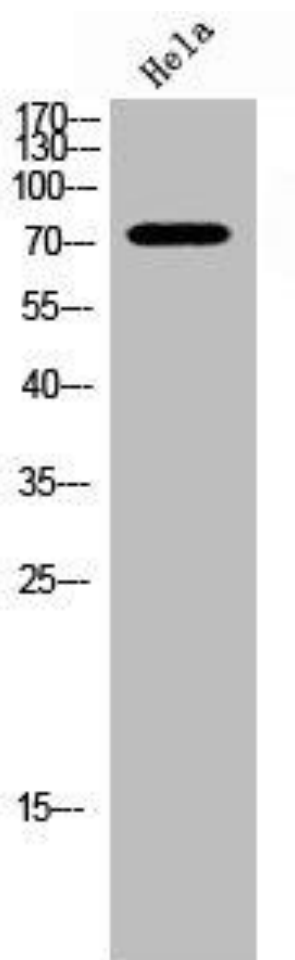
Immunogen:

Synthesized peptide derived from human FoxO3A around the phosphorylation site of S253.

Storage:

Liquid in PBS containing 50% glycerol, 0.5% BSA and 0.02% sodium azide.

Product Images



Western Blot analysis of HELA cells using Phospho-FoxO3A (S253) Polyclonal Antibody.