

# ATG4B Antibody



PACO02758

---

## Product Information

**Size:**

50ug

**Reactivity:**

Human, Mouse

**Source:**

Rabbit

**Isotype:**

IgG

**Applications:**

ELISA, WB, IHC

**Recommended dilutions:**

WB:1:500-1:2000, IHC:1:100-1:300

**Protein Background:**

**Gene ID:**

ATG4B

**Uniprot**

Q9Y4P1

**Synonyms:**

ATG4B; APG4B; AUTL1; KIAA0943; Cysteine protease ATG4B; AUT-like 1 cysteine endopeptidase; Autophagin-1; Autophagy-related cysteine endopeptidase 1; Autophagy-related protein 4 homolog B; hAPG4B

**Immunogen:**

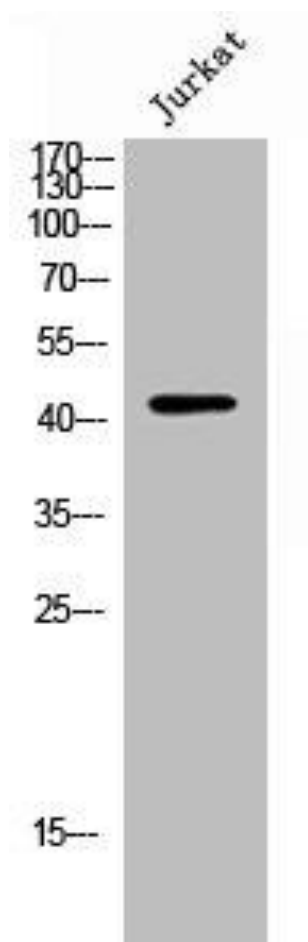
Synthesized peptide derived from the Internal region of human Atg4b.

**Storage:**

Liquid in PBS containing 50% glycerol, 0.5% BSA and 0.02% sodium azide.

## Product Images

---



Western Blot analysis of Jurkat cells using Atg4b Polyclonal Antibody.