

# Phospho-FLT3 (Y842) Antibody



PACO02761

---

## Product Information

**Size:**

50ug

**Reactivity:**

Human, Mouse

**Source:**

Rabbit

**Isotype:**

IgG

**Applications:**

ELISA, WB

**Recommended dilutions:**

WB:1:500-1:2000

**Protein Background:****Gene ID:**

FLT3

**Uniprot**

P36888

**Synonyms:**

FLT3; CD135; FLK2; STK1; Receptor-type tyrosine-protein kinase FLT3; FL cytokine receptor; Fetal liver kinase-2; FLK-2; Fms-like tyrosine kinase 3; FLT-3; Stem cell tyrosine kinase 1; STK-1; CD antigen CD135

**Immunogen:**

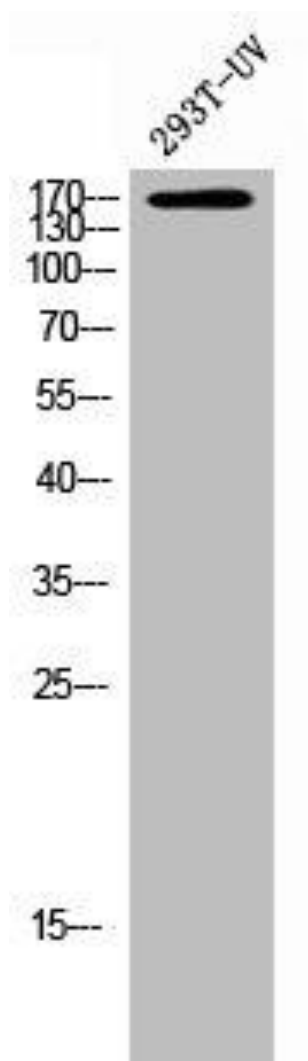
Synthesized peptide derived from human Flt-3 around the phosphorylation site of Y842.

**Storage:**

Liquid in PBS containing 50% glycerol, 0.5% BSA and 0.02% sodium azide.

## Product Images

---



Western Blot analysis of 293T-UV cells using Phospho-Flt-3 (Y842) Polyclonal Antibody.