

PACO02771

Product Information

Size:

50ug

Reactivity:

Human

Source:

Rabbit

Isotype:

IgG

Applications:

ELISA, WB

Recommended dilutions:

WB:1:500-1:2000

Protein Background:

Gene ID:

NCAPH

Uniprot

Q15003

Synonyms:

NCAPH; BRRN; BRRN1; CAPH; KIAA0074; Condensin complex subunit 2; Barren homolog protein 1; Chromosome-associated protein H; hCAP-H; Non-SMC condensin I complex subunit H; XCAP-H homolog

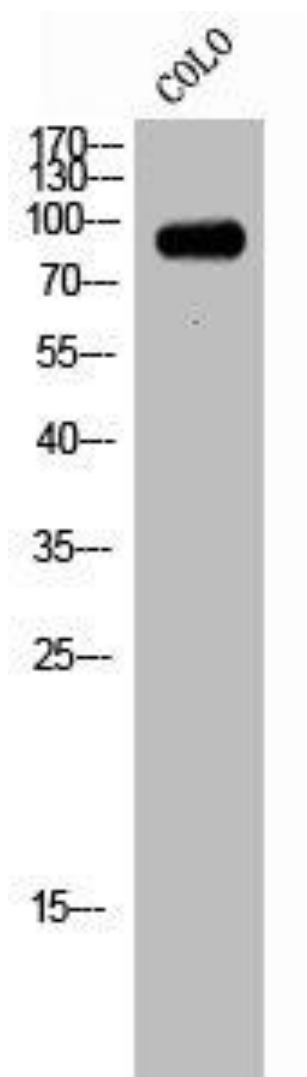
Immunogen:

Synthesized peptide derived from the Internal region of human hCAP-H.

Storage:

Liquid in PBS containing 50% glycerol, 0.5% BSA and 0.02% sodium azide.

Product Images



Western Blot analysis of COLO cells using hCAP-H Polyclonal Antibody.