

POTEH/POTEG Antibody



PACO02773

Product Information

Size:

50ug

Reactivity:

Human

Source:

Rabbit

Isotype:

IgG

Applications:

ELISA, WB, IHC

Recommended dilutions:

WB:1:500-1:2000, IHC:1:100-1:300

Protein Background:**Gene ID:**

POTEH/POTEG

Uniprot

Q6S545/Q6S5H5

Synonyms:

POTEH; A26C3; ACTBL1; POTE22; POTE ankyrin domain family member H; ANKRD26-like family C member 3; Prostate; ovary, testis-expressed protein on chromosome 22; POTE-22; POTEG; A26C2; POTE14; POTE ankyrin domain family member G; ANKRD26-like

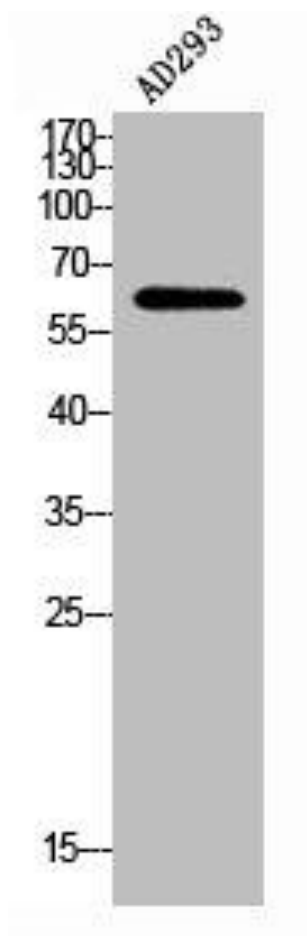
Immunogen:

Synthesized peptide derived from the Internal region of human POTE-14/22.

Storage:

Liquid in PBS containing 50% glycerol, 0.5% BSA and 0.02% sodium azide.

Product Images



Western Blot analysis of AD293 using POTE-14/22 Polyclonal Antibody.