

Phospho-NR3C1 (S226) Antibody



PACO02799

Product Information

Size:

50ug

Reactivity:

Human, Mouse, Rat

Source:

Rabbit

Isotype:

IgG

Applications:

ELISA, WB, IHC

Recommended dilutions:

WB:1:500-1:2000, IHC:1:100-1:300

Protein Background:**Gene ID:**

NR3C1

Uniprot

P04150

Synonyms:

NR3C1; GRL; Glucocorticoid receptor; GR; Nuclear receptor subfamily 3 group C member 1

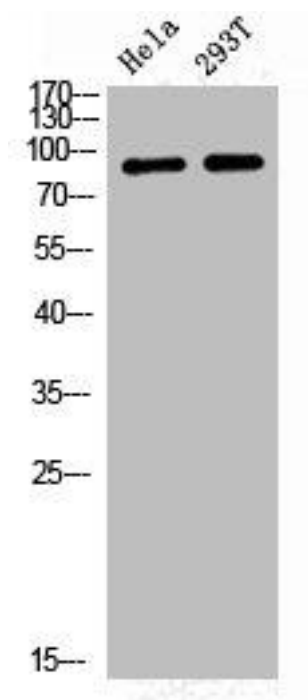
Immunogen:

Synthesized peptide derived from human GR around the phosphorylation site of S226.

Storage:

Liquid in PBS containing 50% glycerol, 0.5% BSA and 0.02% sodium azide.

Product Images



Western Blot analysis of HELA 293T cells using Phospho-GR (S226) Polyclonal Antibody.