

# Phospho-HSF1 (S303) Antibody



PACO02819

---

## Product Information

**Size:**

50ug

**Reactivity:**

Human, Mouse

**Source:**

Rabbit

**Isotype:**

IgG

**Applications:**

ELISA, WB, IHC, IF

**Recommended dilutions:**

WB:1:500-1:2000, IHC:1:100-1:300,  
IF:1:200-1:1000

**Protein Background:****Gene ID:**

HSF1

**Uniprot**

Q00613

**Synonyms:**

HSF1; HSTF1; Heat shock factor protein 1; HSF 1; Heat shock transcription factor 1; HSTF 1

**Immunogen:**

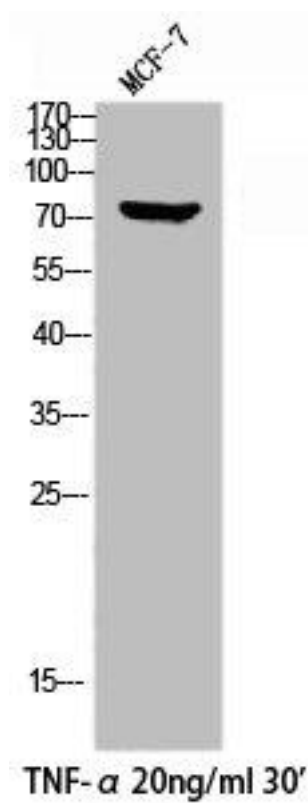
Synthesized peptide derived from human HSF1 around the phosphorylation site of S303.

**Storage:**

Liquid in PBS containing 50% glycerol, 0.5% BSA and 0.02% sodium azide.

## Product Images

---



Western Blot analysis of MCF7+TNF cells using Phospho-HSF1 (S303) Polyclonal Antibody.