

# FOXN2 Antibody



PACO02825

---

## Product Information

**Size:**

50ug

**Reactivity:**

Human

**Source:**

Rabbit

**Isotype:**

IgG

**Applications:**

ELISA, WB, IHC

**Recommended dilutions:**

WB:1:500-1:2000, IHC:1:100-1:300

**Protein Background:****Gene ID:**

FOXN2

**Uniprot**

P32314

**Synonyms:**

FOXN2; HTLF; Forkhead box protein N2; Human T-cell leukemia virus enhancer factor

**Immunogen:**

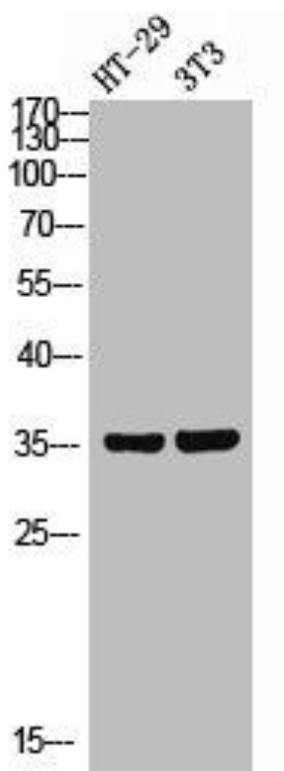
Synthesized peptide derived from the C-terminal region of human FoxN2.

**Storage:**

Liquid in PBS containing 50% glycerol, 0.5% BSA and 0.02% sodium azide.

## Product Images

---



Western Blot analysis of HT-29/NIH-3T3 using FoxN2 Polyclonal Antibody.