

Phospho-CXCR2 (S347) Antibody



PACO02849

Product Information

Size:

50ug

Reactivity:

Human, Mouse

Source:

Rabbit

Isotype:

IgG

Applications:

ELISA, WB, IHC, IF

Recommended dilutions:

WB:1:500-1:2000, IHC:1:100-1:300,
IF:1:200-1:1000

Protein Background:**Gene ID:**

CXCR2

Uniprot

P25025

Synonyms:

CXCR2; IL8RB; C-X-C chemokine receptor type 2; CXC-R2; CXCR-2; CDw128b;
GRO/MGSA receptor; High affinity interleukin-8 receptor B; IL-8R B; IL-8 receptor type
2; CD antigen CD182

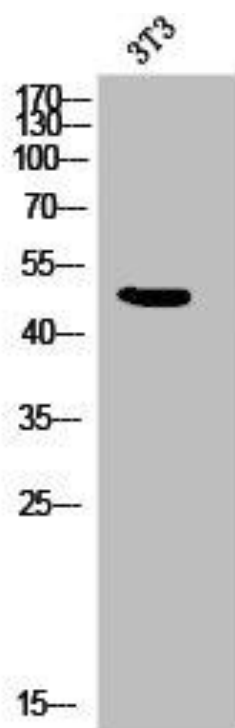
Immunogen:

Synthesized peptide derived from human IL-8RBeta around the phosphorylation site of
S347.

Storage:

Liquid in PBS containing 50% glycerol, 0.5% BSA and 0.02% sodium azide.

Product Images



Western Blot analysis of 3T3 cells using Phospho-IL-8RBeta (S347) Polyclonal Antibody.