

Phospho-KRT8 (S432) Antibody



PACO02856

Product Information

Size:

50ug

Reactivity:

Human, Mouse, Rat

Source:

Rabbit

Isotype:

IgG

Applications:

ELISA, WB, IHC, IF

Recommended dilutions:

WB:1:500-1:2000, IHC:1:100-1:300,
IF:1:200-1:1000

Protein Background:**Gene ID:**

KRT8

Uniprot

P05787

Synonyms:

KRT8; CYK8; Keratin; type II cytoskeletal 8; Cytokeratin-8; CK-8; Keratin-8; K8; Type-II keratin Kb8

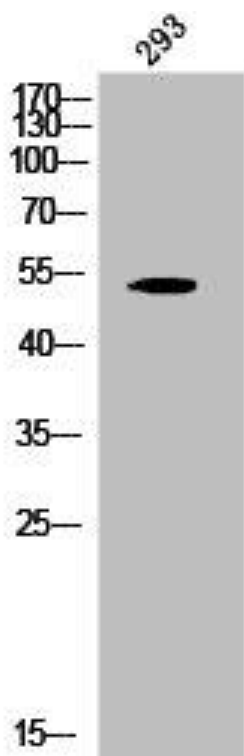
Immunogen:

Synthesized peptide derived from human Cytokeratin 8 around the phosphorylation site of S432.

Storage:

Liquid in PBS containing 50% glycerol, 0.5% BSA and 0.02% sodium azide.

Product Images



Western Blot analysis of 293 cells using Phospho-Cytokeratin 8 (S432) Polyclonal Antibody.