

# Phospho-KRT18 (S52) Antibody



PACO02858

---

## Product Information

**Size:**

50ug

**Reactivity:**

Human

**Source:**

Rabbit

**Isotype:**

IgG

**Applications:**

ELISA, WB, IHC, IF

**Recommended dilutions:**

WB:1:500-1:2000, IHC:1:100-1:300,  
IF:1:200-1:1000

**Protein Background:****Gene ID:**

KRT18

**Uniprot**

P05783

**Synonyms:**

KRT18; CYK18; PIG46; Keratin; type I cytoskeletal 18; Cell proliferation-inducing gene 46 protein; Cytokeratin-18; CK-18; Keratin-18; K18

**Immunogen:**

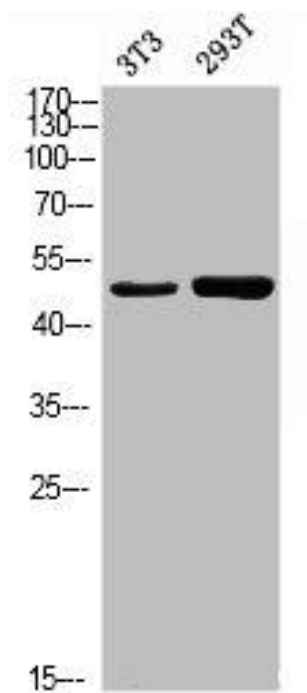
Synthesized peptide derived from human Cytokeratin 18 around the phosphorylation site of S52.

**Storage:**

Liquid in PBS containing 50% glycerol, 0.5% BSA and 0.02% sodium azide.

## Product Images

---



Western blot analysis of 3T3 293T using p-Cytokeratin 18 (S52) antibody.